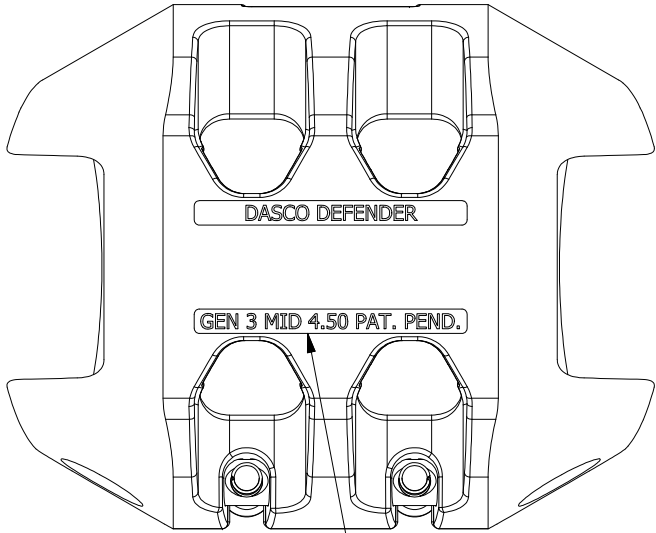
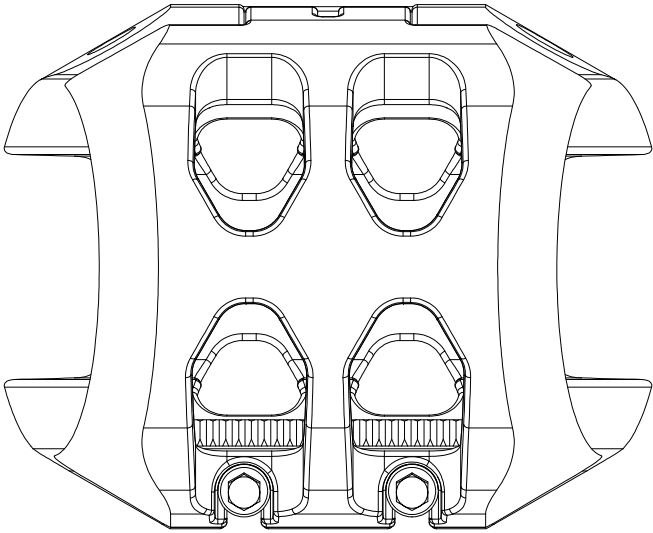


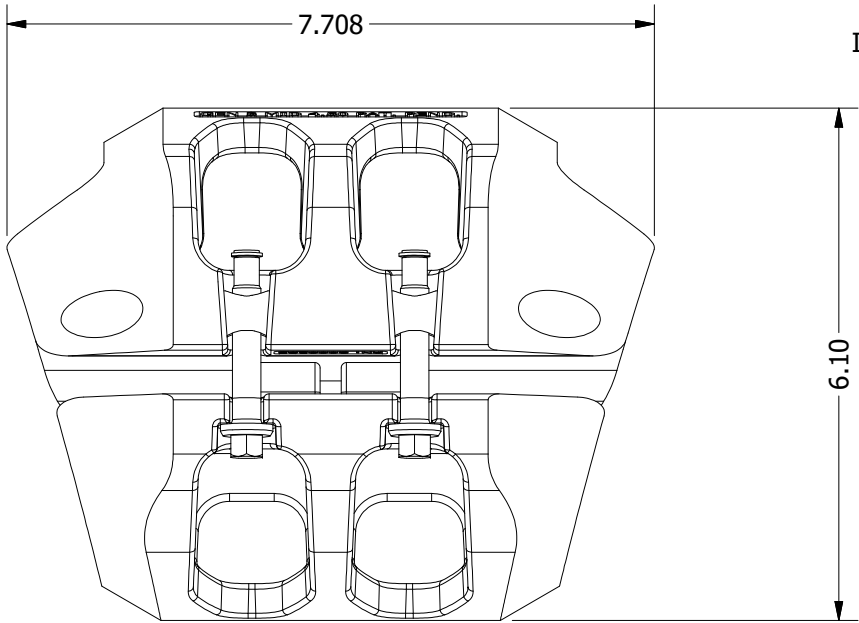
ITEM	QTY	PART NUMBER	TITLE	MATERIAL
1	2	9000150	GEN 3 - MID & COLLAR GUARD LATCH BOLT	AISI 4140 Fy MIN = 110 ksi
2	2	9000151	GEN 3 - MID AND COLLAR GUARD LATCH NUT	AISI 4140 Fy MIN = 110 ksi
3	1	9000250	GEN 3 MIDJOINT GUARD HINGE PIN	AISI 4140 Fy MIN = 110 ksi
4	2	9000275	GEN 3 GUARD - RETENTION CLIP	AISI 1080 SPRING STEEL
5	1	9000283	DEFENDER GUARD - MID 4.50 TKC 4040 HOI - TOP HALF CABLE SIDE	DASCO-CAST-STEEL-002
6	1	9000284	DEFENDER GUARD - MID 4.50 TKC 4040 HOI - BTM HALF	DASCO-CAST-STEEL-002



TUBING SIZE INDICATOR  
& IDENTIFICATION LABELS

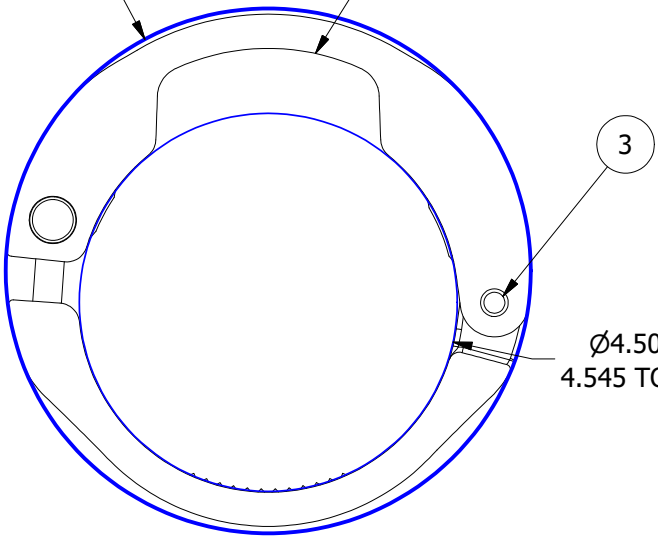


VIEW A-A  
ROTATED FOR CLARITY

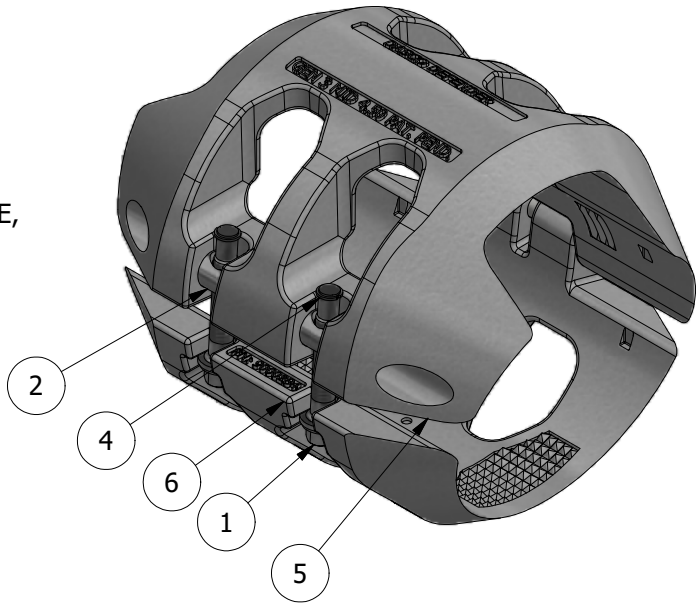


Ø6.25 NOMINAL OD  
INSTALLED ON 4.50 TKC 4040 HOI TUBING

1EA OF 1/4 CAPLINE, 1/2 CAPLINE,  
& SAGD ESP CABLE



Ø4.50 TKC 4040 HOI TUBING  
4.545 TO 4.478 PER API SPEC 5CT



APPROXIMATE ASSEMBLY WEIGHT: 11.0 lbmass

0	CUSTOMER DRAWING	17 AUG 2020	CDB
REV	DESCRIPTION	DATE	BY
REVISION HISTORY			

DO NOT SCALE DRAWING

VALUES IN INCHES UNLESS OTHERWISE NOTED.  
TOLERANCES UNLESS OTHERWISE SPECIFIED:  
.XXX ± 0.005 .XX ± 0.01 | .X ± 0.1 | ANG ± 0.5  
GEOMETRIC DIMENSIONING & TOLERANCING  
PER ANSI Y14.5M-1994

ASSEMBLY - DEFENDER GUARD - GEN 3  
MID JOINT - 4.50 TKC 4040 HOI

TITLE:	9000282	0	1 OF 1
PARTNUMBER:		REV:	SHEET:

"PROPRIETARY RIGHTS ARE INCLUDED IN THE INFORMATION DISCLOSED HEREIN AND THIS DOCUMENT IS RELEASED TO AND ACCEPTED BY THE POSSESSOR ON THE CONDITION AND UNDERSTANDING THAT NEITHER THIS DOCUMENT NOR THE INFORMATION DISCLOSED HEREIN SHALL BE REPRODUCED OR TRANSFERRED IN ANY MANNER OR USED OR DISCLOSED TO OTHERS FOR ANY PURPOSE, EXCEPT AS SPECIFICALLY AUTHORIZED IN WRITING BY DASCO."